



QuantaSep® 1000

Sanitary Bench Top Scale Up System

QuantaSep® is a fully integrated system to truly automate your purification process. With its powerful and easy to use Windows® based software, it allows the user to automatically equilibrate, load, elute and regenerate up to three columns. The user can also control each step in the purification based on UV, pH, conductivity, time, temperature, air sensors or any external user-defined variable. As the sensors monitor column outflow, the computer reads the information to automatically change buffers, start gradients and collect fractions, stepping through the method as you programmed it. The computer logs all data for analysis and printout.



Flow Range 10-1000 ml/min

8 Mission Critical Ways a QuantaSep® Can Help Get Your Department In Control

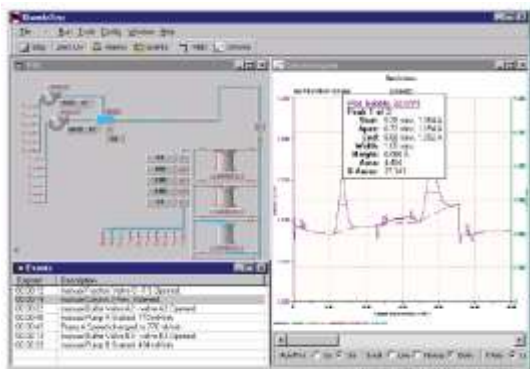
- ✓ Reduce Project Backlog
- ✓ Improve Product Quality and Reliability
- ✓ Reduce Batch Failures
- ✓ Unattended Clinical Production 24/7 Now!
- ✓ Reduce Tedious Documentation
- ✓ Easy Scale-Up 100X
- ✓ Cut Costs
- ✓ Space Efficient

QuantaSep® 1000 Highlights

- Automates buffer delivery, column switching, fraction collection, based on UV, pH and conductivity.
- Small footprint can fit on bench-top, laminar flow hood or cold room.
- Dual dynamic flow range: 1-100 ml/min & 10-1000 ml/min.
- Graphical, intuitive software “dashboard” for easy operation and training.
- Automated GMP reports
 - Complete batch reports
 - Event Logs
 - Chromatograms & calibration history
- Precision Hardware
 - 100:1 turndown ratio for accurate gradients
 - Low system volume
 - Integrated pH, UV, conductivity flow cell
- Safety features
 - Active air trap minimizes “bubble trap dilution”
 - Leak and pressure alarms
 - Built-in safety interlocks
 - Software method checks
 - Software security prevents unauthorized operation and tampering

The Right Combination of Simplicity and Power

The simplicity of QuantaSep® system's interactive graphical user interface gives the system its efficiency and power by making it easy to learn and use. You don't need to refer to printed flow diagrams and manuals. Even if you have little or no computer experience, the QuantaSep® intuitive on-screen operations make the system easy to use from the moment you plug it in.



QuantaSep® Has What It Takes

The QuantaSep® System can automate many of the routine manual tasks related to process development and free up key scientists' time to handle additional mission-critical projects. It allows process development departments to manage deadlines to produce clinical/pre-clinical material, scale-up processes and troubleshoot or downscale production problems all within existing headcount and budgetary constraints. The payback for these systems has ranged from 3-18 months!



1205 SAN LUIS OBISPO ST, HAYWARD, CA 94544
PHONE: 510-475-0650 FAX: 510-475-0625
HTTP://WWW.SEPRAGEN.COM

QuantaSep® 1000 Specifications

- 12 user selectable buffer inlets
- 3 user selectable columns in forward/reverse/bypass mode
- 10 user selectable fractions with fraction collect capability
- Sanitary design
- Range: 10-1000 ml/min, $\pm 3\%$
- Hold-up volume: 120 ml
- Small component footprint:
- 21" x 27" x 16"
- 5%-95% gradient capability
- Pressure rating: 100 psi
- Tubing: 1/4" I.D.

Wetted Materials of Construction

Silicone, polyethylene and polypropylene tubing; polypropylene valves and fittings; PTFE diaphragms; glass/quartz/316L stainless steel sensor components.

Components Specifications

- 280 nm UV 0-2 Au
- 254 nm UV 0-2 Au (Optional)
- Conductivity Sensor 0-200 ms, $\pm 5\%$
- pH Sensor 1-14 pH, ± 0.2
- Air Bubble $> 0.20''$
- Pressure Sensor 0-100 psi ± 1 psi
- Leak Sensor 5 ml leak volume

Warranty, Installation & Support

All QuantaSep® systems are backed by Sepragen's one year limited warranty. Installation and training, along with IQ/OQ are performed by the Sepragen Service Group. Preventive maintenance services are provided at additional cost. Validation support packages are also available.

To learn more call:
(510) 475-0650

E-mail: info@sepragen.com